



Manufactured in the UK



PERSPECTIVE

SOLAR, OPTICAL AND COLOUR FASTNESS PROPERTIES

| | SOLAR | | | OPTICAL | | | SC | CF | DIM out | UV block | G TOT | | | |
|----------------|----------------|----------------|----------------|----------------|----------------|----------------|------|----|---------|----------|-------|------|------|-------|
| | T _s | R _s | A _s | T _o | R _o | A _o | | | | | SG | DG | TG | DG LE |
| Arctic White | 21 | 69 | 10 | 17 | 82 | 1 | 0.33 | 6 | 3 | 94 | 0.26 | 0.28 | 0.29 | 0.32 |
| Black Iron | 4 | 8 | 88 | 4 | 9 | 87 | 0.92 | 6 | 3 | 95 | 0.59 | 0.59 | 0.60 | 0.61 |
| Desert Sand | 20 | 60 | 20 | 15 | 68 | 17 | 0.42 | 6 | 3 | 95 | 0.31 | 0.33 | 0.35 | 0.41 |
| Shale Grey | 13 | 44 | 43 | 9 | 51 | 40 | 0.57 | 6 | 3 | 95 | 0.39 | 0.41 | 0.42 | 0.45 |
| Tuscan Beige | 21 | 62 | 17 | 17 | 73 | 10 | 0.40 | 6 | 3 | 95 | 0.31 | 0.32 | 0.33 | 0.37 |
| Windspray Grey | 18 | 53 | 29 | 14 | 60 | 26 | 0.49 | 6 | 3 | 94 | 0.36 | 0.37 | 0.38 | 0.42 |

T: % Transmittance
R: % Reflectance
A: % Absorption
SC: Shading Co-efficient

CF: Colour Fastness
Dim out: 1= High light penetration
4= Low light penetration
5= Blackout

UV Block: the percentage of UV light blocked by the fabric
GTOT: SG = Single Glazed, DG = Double Glazed, TG = Triple Glazed,
DG LE = Double Glazed Low Emissivity.

PERSPECTIVE

ROLLER | ROMAN | PANEL

SCREEN FABRIC - 3% OPENNESS

COLOUR RANGE - 6

FABRIC WIDTH - 3.00m (118")

FABRIC COMPOSITION - 78% PVC, 22% POLYESTER

A3



SHADING CO-EFFICIENT

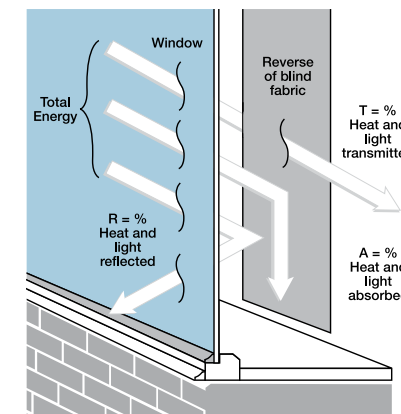
The solar heat gain with the blind at the window divided by the solar heat gain with no blind at the window. The lower the shading co-efficient, therefore, the higher the efficiency of the fabric. The test results in the table above have been achieved using a single 6mm glass glazing system.

G TOT

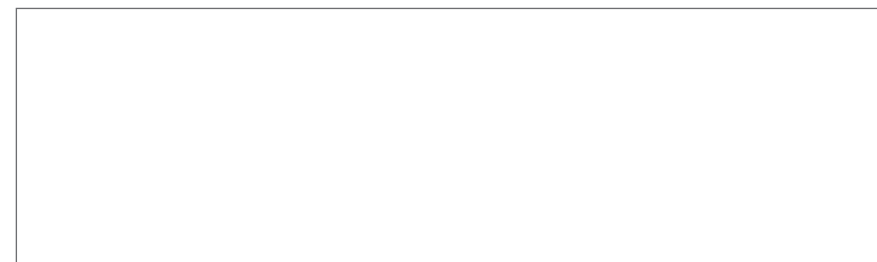
A measure of total solar energy that passes through the glazing system and the blind fabric.

FIRE PROTECTION

Perspective meets FR standard BS 5867 Part 2 Type B.
Further information is available on request.

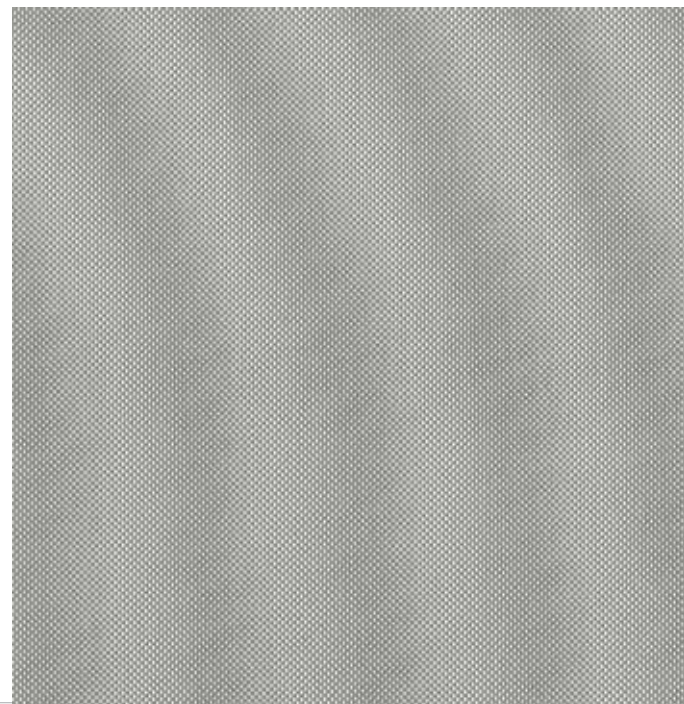


BLINDS WITH LOUVOLITE® PERFORMANCE FABRICS SUPPLIED BY:



| | | |
|-------------------------------------|---|--|
| CI/SfB 1976 reference by SfB Agency | | |
| (76.7) | X | |

S060601-17-Pe 17.1



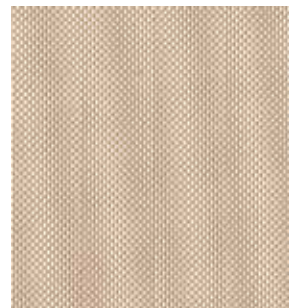
Windspray Grey



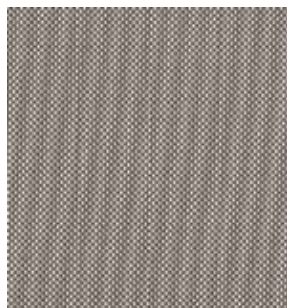
Arctic White



Tuscan Beige



Desert Sand



Shale Grey



Black Iron

PERSPECTIVE

ROLLER | ROMAN | PANEL



FABRIC COMPOSITION
78% pvc, 22% polyester

FABRIC WIDTH
3.00m (118")

OPENNESS
3%
Openness factors are for guidance only. For comprehensive performance data please see Louvolite for solar and optical figures.

FABRIC WEIGHT
460g/m2 (13.6oz/yd2)

FLAMMABILITY STANDARDS
Complies with BS 5867 (Part 2, Type B)

COLOUR FASTNESS
Tested in accordance with BS EN ISO 105-B01:1999

GREENSHIELD
Fabrics featuring Greenshield have been tested to confirm no harmful VOC's or hazardous substances will be released into the environment in quantities that are recognised as potentially dangerous to occupants of dwellings or buildings.

CLEANING
Perspective fabrics can be wiped clean.
See manufacturers instructions. Tested in accordance with BS EN 26330:1994 method 7a.

PROPERTIES



Flame retardant



Wipe clean



Greenshield